



Respiratory Illness Surveillance

Report #2

CDC Week 43:

Oct. 20, 2024 - Oct. 26, 2024



Epidemiology Division:

Dustin Boothe, MPH, REHS DBoothe@carson.org
Garrett Olson, MPH GOlson@carson.org
Raechel Freshman, MPH, CIC RFreshman@carson.org

Public Health Data Analyst:

Jon M. Evasovic, Ph.D. JEvasovic@carson.org

Weekly Updates & Season Summary

Influenza and influenza-like illness (ILI):

Current Week

- 51 new ILI cases reported in Carson City, Douglas County, and Lyon County
- 4 new influenza hospitalizations and 0 deaths

Season Summary

- 47 total confirmed influenza cases (Increase of 15)
- Influenza incidence rate = 26.6 per 100,000 population
- Influenza hospitalization rate = 3.9 per 100,000 population

COVID-19 and COVID-like illness (CLI):

Current Week

- 62 new CLI cases reported within the Quad-County Region*
- 8 new COVID-19 hospitalizations and 0 deaths

Season Summary

- 193 total confirmed COVID-19 cases (Increase of 26)
- COVID-19 incidence rate = 106.5 per 100,000 population
- COVID-19 hospitalization rate = 8.8 per 100,000 population

Respiratory Syncytial Virus (RSV):

Current Week

- 0 new RSV cases reported in Douglas County

Season Summary

- 0 total confirmed RSV cases

*Storey County is included in CLI surveillance reports for the Quad-County Region.

Note that reported weekly data are preliminary and may change due to delayed submissions or additional laboratory testing.

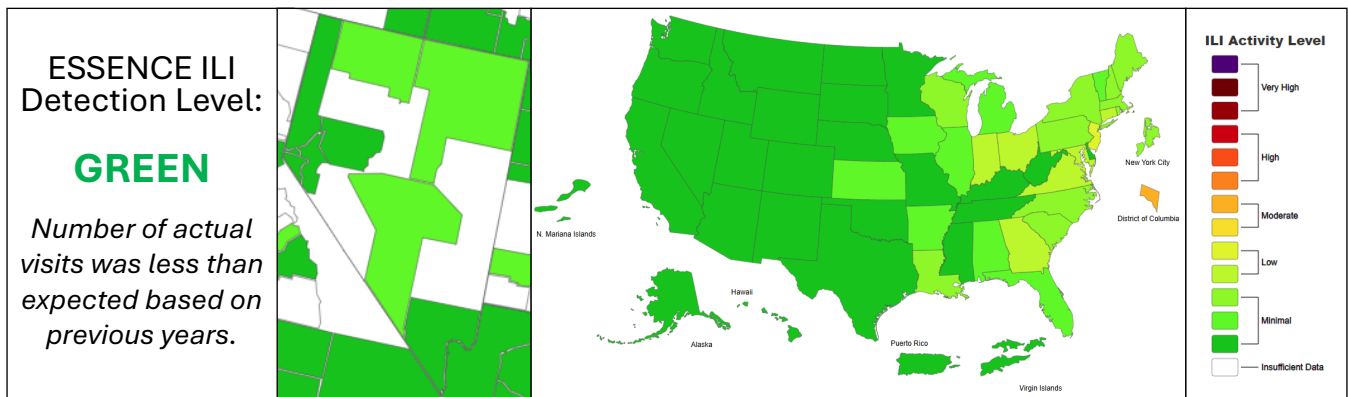
Influenza-like illness (ILI)

Overview:

Influenza-like illness (ILI) is defined as an acute respiratory infection with a fever ($\geq 100^{\circ}\text{F}$ [38.0°C]), cough and/or sore throat, and symptom onset within the last 10 days. ILI activity is determined by the proportion of outpatient visits to emergency departments and urgent cares for respiratory illness. CCHHS surveils ILI and influenza activity in Carson City, Douglas County, and Lyon County.

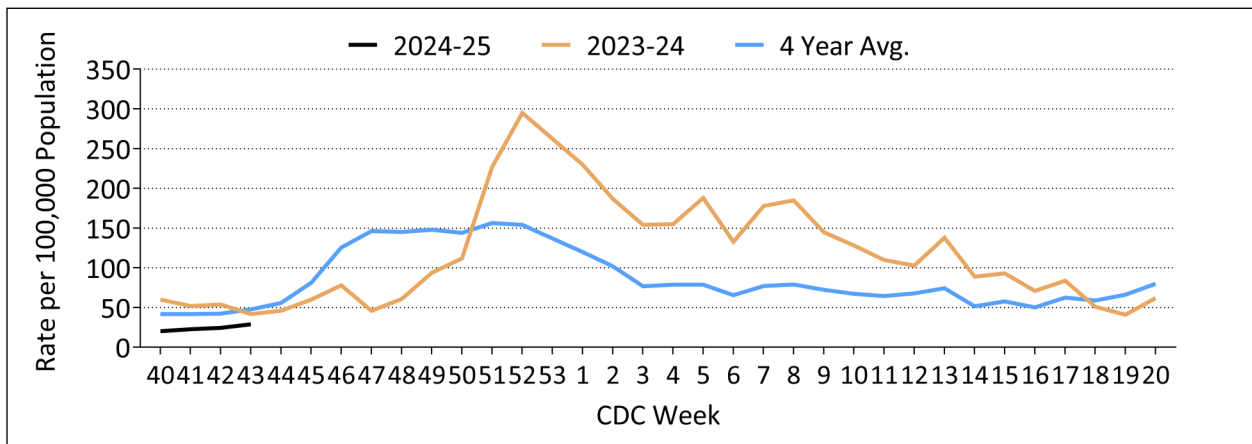
- ◆ The largest proportion of newly reported ILI cases (**33.3%**) was in the 5-24 year age group.
- ◆ The smallest proportion of newly reported ILI cases (**3.9%**) was in the 50-64 year age group.
- ◆ Cumulative ILI case counts for Carson City, Douglas County, and Lyon County were **18.3%** lower compared to the same time point last season.
- ◆ Lyon County had the highest weekly ILI rate at **54.4 per 100,000**.
- ◆ Douglas County had the lowest weekly ILI rate at **14.7 per 100,000**.
- ◆ The statewide ILI rate for Nevada was **22.6 per 100,000**.
- ◆ Type A comprised **86.6%** of laboratory confirmed influenza cases.

Figure 1: Statewide and National ILI Surveillance (CDC Week 43, 2024)



Data source: <https://gis.cdc.gov/grasp/fluview/main.html>

Figure 2: Comparison of Current Season ILI Rates with Previous Seasons (Carson City, Douglas County, and Lyon County)



For years without a week 53, values were obtained by averaging week 52 and week 1.

Data source: <https://essence.syndromicsurveillance.org>

Note that reported weekly data are preliminary and may change due to delayed submissions or additional laboratory testing.

Influenza-like illness (ILI)

Table 1: Comparison of Current Week ILI Rates with Previous Week and Other Jurisdictions

	Carson City	Douglas County	Lyon County	Washoe County	Clark County	Nevada
Previous Week	6.7	5.5	57.6	28.2	18.1	19.7
Current Week	15.1 (+125.4%)	14.7 (+167.3%)	54.4 (-5.6%)	27.1 (-3.9%)	21.9 (+21.0%)	22.6 (+14.7%)
Season Cumulative	46.9	36.8	195.1	83.7	53.8	80.5

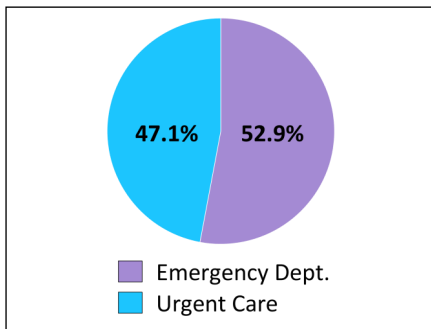
Data source: <https://essence.syndromicsurveillance.org>

Table 2: Comparison of Current Week ILI Counts with Previous Seasons (Carson City, Douglas County, and Lyon County)

	Current Season (2024-25)	Change From Previous Week	Previous Season (2023-24)	Change From Previous Season	4-Season Avg. (2020-24)	Change From 4-Season Avg.
Previous Week	43	+7.5%	54	+25.6%	42.5	+1.2%
Current Week	51	+18.6%	42	+21.4%	47.8	+6.7%
Season Cumulative	170	+42.9%	208	-18.3%	173.8	-2.2%

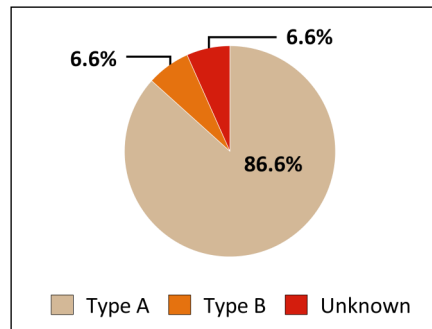
Data source: <https://essence.syndromicsurveillance.org>

Figure 3: ILI by Facility Type (CDC Week 43, 2024)



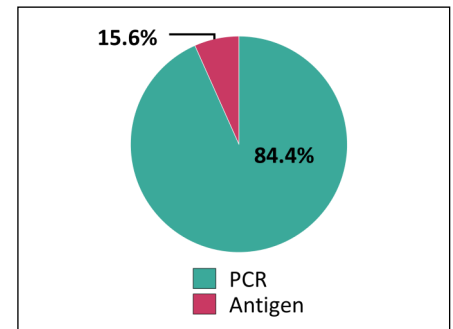
Data represents Carson City, Douglas County, and Lyon County.

Figure 4: Flu by Type (CDC Week 43, 2024)



Data represents Carson City, Douglas County, and Lyon County.

Figure 5: Flu by Test Type (CDC Week 43, 2024)



Data represents Carson City, Douglas County, and Lyon County.

Table 3: Confirmed Influenza by Age (CDC Week 43, 2024)

Age Group	Population	Cases	Rate/100K	Weekly Change (%)
0-4	8,293	2	24.1	-33.3%
5-24	36,052	5	13.9	+66.7%
25-49	50,615	3	5.9	+50.0%
50-64	38,075	0	0.0	-100%
65+	43,474	5	11.5	+400%

Data represents Carson City, Douglas County, and Lyon County.

Note that reported weekly data are preliminary and may change due to delayed submissions or additional laboratory testing.

Influenza-like illness (ILI)

Table 4: Confirmed Influenza by Race/Ethnicity (CDC Week 43, 2024)

Race/Ethnicity	Population	Cases	Rate/100K	Weekly Change (%)
American Indian/Alaskan Native	4,622	0	0.0	0%
Asian/Pacific Islander	4,381	1	22.8	-
Black/African American	1,948	0	0.0	0%
White	131,951	11	8.3	+57.1%
Hispanic or Latino	33,603	2	6.0	-50.0%

Data represents Carson City, Douglas County, and Lyon County.

Table 5: Confirmed Influenza by Hospitalization, Vaccination Status, ICU Admission, and Death (CDC Week 43, 2024)

	Current Report (CDC Week 43, 2024)								Cumulative for 2024-25 Season							
	Hosp.		Vax		ICU		Death		Hosp.		Vax		ICU		Death	
	#	%	#	%	#	%	#	%	#	%	#	%	#	%	#	%
Carson City	2	13.3	0	0.0	0	0.0	0	0.0	4	8.5	1	2.1	0	0.0	0	0.0
Douglas County	0	0.0	0	0.0	0	0.0	0	0.0	1	2.1	0	0.0	0	0.0	0	0.0
Lyon County	2	13.3	0	0.0	0	0.0	0	0.0	2	4.2	0	0.0	0	0.0	0	0.0

Percentage represents proportion of total cases in Carson City, Douglas County, and Lyon County by week and season.

COVID-like illness (CLI)

Overview:

COVID-like illness (CLI) is defined as an acute respiratory infection with a fever ($\geq 100^{\circ}\text{F}$ [38.0°C]) and cough or shortness of breath or difficulty breathing. CCHHS surveils CLI activity in Carson City, Douglas County, Lyon County, and Storey County.

- ◆ The largest proportion of newly reported CLI cases (**32.2%**) was in the 65+ year age group.
- ◆ The smallest proportion of newly reported ILI cases (**8.1%**) was in the 0-4 year age group.
- ◆ Cumulative CLI case counts for the Quad-County Region were **38.8%** lower compared to the same point last season.
- ◆ Lyon County had the highest weekly CLI rate at **62.4 per 100,000**.
- ◆ Storey County had the lowest weekly CLI rate at **0.0 per 100,000**.
- ◆ The statewide CLI rate for Nevada was **23.0 per 100,000**.

ESSENCE CLI Detection Level:

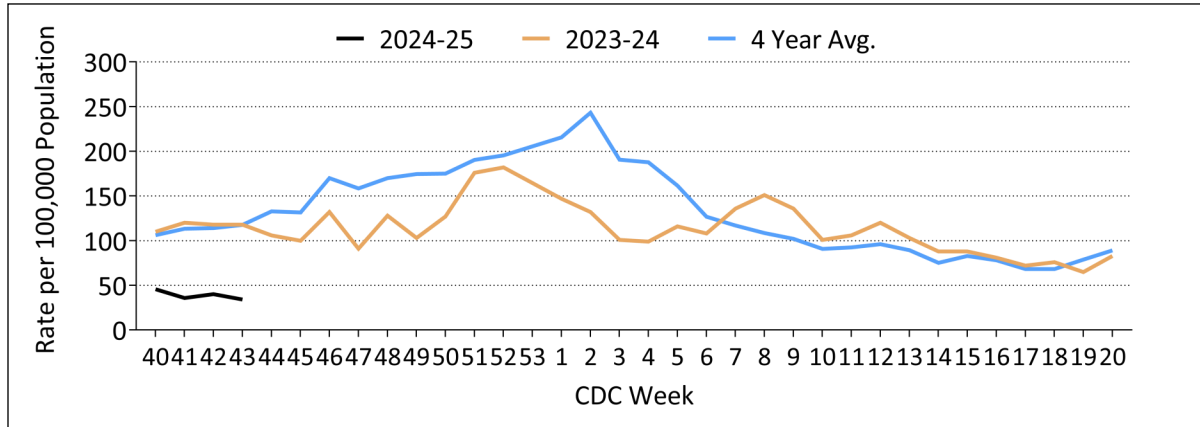
GREEN

Number of actual visits was less than expected based on previous years.

Note that reported weekly data are preliminary and may change due to delayed submissions or additional laboratory testing.

COVID-like illness (CLI)

Figure 6: Comparison of Current Season CLI Rates with Previous Seasons (Quad-County Region)



For years without a week 53, values were obtained by averaging week 52 and week 1. Data source: <https://essence.syndromicsurveillance.org>

Table 6: Comparison of Current Week CLI Rates with Previous Weeks and Other Jurisdictions

	Carson City	Douglas County	Lyon County	Washoe County	Clark County	Nevada
Previous Week	18.4	38.7	64.0	28.4	19.2	21.4
Current Week	16.7 (-9.3%)	23.9 (-38.3%)	62.4 (-5.6%)	30.7 (+8.1%)	21.1 (+9.8%)	23.0 (+7.4%)
Season Cumulative	80.4	112.4	271.9	95.4	62.5	82.6

Table 7: Comparison of Current Week CLI Counts with Previous Seasons (Carson City, Douglas County, and Lyon County)

	Current Season (2024-25)	Change From Previous Week	Last Season (2023-24)	Change From Previous Season	4-Season Avg. (2020-24)	Change From 4-Season Avg.
Previous Week	73	+12.3%	118	-38.1%	114.5	-36.2%
Current Week	62	-15.1%	118	-47.5%	119	-47.9%
Season Cumulative	285	+27.8%	466	-38.8%	455	-37.4%

Data source: https://essence.syndromicsurveillance.org/nssp_essence

Figure 7: CLI by Facility Type, Quad-County Region (CDC Week 43, 2024)

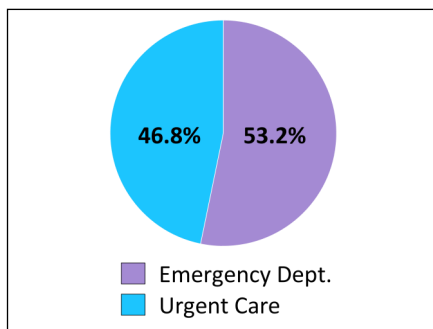
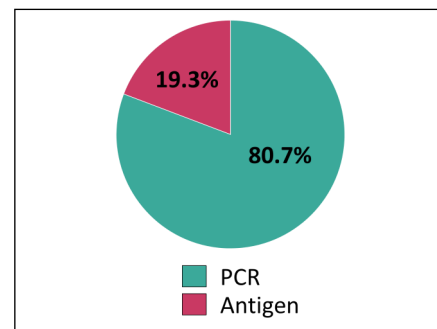


Figure 8: COVID-19 by Test Type, Quad-County Region (CDC Week 43, 2024)



Note that reported weekly data are preliminary and may change due to delayed submissions or additional laboratory testing.

COVID-like illness (CLI)

Table 8: Confirmed COVID-19 by Age, (CDC Week 43, 2024)

Age Group	Population	Cases	Rate/ 100K	Weekly Change (%)
0-4	8,433	0	0.0	0%
5-24	36,783	3	8.2	+200%
25-49	51,942	6	11.6	-25%
50-64	39,230	3	7.6	-72.7%
65+	44,886	14	31.2	-33.3%

Data represents the Quad-County Region.

Table 9: Confirmed COVID-19 by Race/Ethnicity, (CDC Week 43, 2024)

Race/Ethnicity	Population	Cases	Rate/ 100K	Weekly Change (%)
American Indian/Alaskan Native	4,686	0	0.0	0%
Asian/Pacific Islander	4,447	0	0.0	-100%
Black/African American	1,960	0	0.0	0%
White	136,298	23	16.9	-41.0%
Hispanic or Latino	33,886	5	14.8	-400%

Data represents the Quad-County Region.

Table 10: Confirmed COVID-19 by Vaccination Status, Hospitalization, ICU Admission, and Death (CDC Week 43, 2024)

	Current Report (CDC Week 43, 2024)								Cumulative for 2024-25 Season							
	Hosp.		Vax		ICU		Death		Hosp.		Vax		ICU		Death	
	#	%	#	%	#	%	#	%	#	%	#	%	#	%	#	%
Carson City	3	1.5	0	0.0	0	0.0	0	0.0	5	2.6	0	0.0	0	0.0	0	0.0
Douglas County	3	1.5	0	0.0	0	0.0	0	0.0	5	2.6	0	0.0	0	0.0	0	0.0
Lyon County	2	1.0	0	0.0	0	0.0	0	0.0	6	3.1	0	0.0	0	0.0	0	0.0
Storey County	0	0.0	0	0.0	0	0.0	0	0.0	0	0.0	0	0.0	0	0.0	0	0.0

Percentage represents proportion of total cases in the Quad-County Region by week and season.

Respiratory Syncytial Virus (RSV)

Overview:

Respiratory syncytial virus (RSV) is a contagious virus that infects the respiratory tract, including the nose, throat, and lungs. It's a common cause of respiratory illness in people of all ages, but it can be more serious for infants, older adults, and people with weakened immune systems.

- 0 RSV case was reported during CDC Week 43.

Note that reported weekly data are preliminary and may change due to delayed submissions or additional laboratory testing.

Pneumonia, Influenza, and COVID-19 (PIC) Mortality

Overview:

The percentage of deaths that occur each week due to pneumonia, influenza, and/or COVID-19 (PIC) is obtained from the National Center for Health Statistics Mortality Surveillance (NCHS).

- ◆ % of total deaths due to PIC in Week 43.
 - ⇒ National = 6.1%
 - EQUAL to the national baseline of 6.1%.
 - BELOW to the epidemic threshold of 6.6%.
 - ⇒ Nevada = 7.2%
 - ABOVE the national baseline and epidemic threshold.
 - ◆ Influenza deaths = 0
 - ◆ COVID-19 deaths = 2
 - ◆ Pneumonia deaths = 0

Key Messages

- Routine annual influenza and COVID-19 vaccinations are recommended for all persons \geq 6 months of age and without contraindications. This includes individuals who have previously received influenza or COVID-19 vaccines.
- Routine annual RSV vaccinations are recommended for all adults \geq 75 years of age and for adults 60-74 years of age at increased risk of RSV disease.

Additional Information

For more information regarding influenza surveillance throughout Nevada, please visit:

- Carson City Health and Human Services (CCHHS)
<https://www.gethealthycarsoncity.org/services/disease-health-topics/influenza>
- Northern Nevada Public Health (NNPH):
<https://www.nnph.org/programs-and-services/ephp/communicable-diseases-and-epidemiology/programs/Influenza%20Surveillance.php>
- Central Nevada Health District (CNHD):
<https://www.centralnevadahd.org/communicable-disease-and-surveillance/>
- Southern Nevada Health District (SNHD):
<http://southernnevadahealthdistrict.org/stats-reports/influenza-surveillance.php>
- The Office of State Epidemiology (OSE):
<https://nvose.org/data-statistics/>

Note that reported weekly data are preliminary and may change due to delayed submissions or additional laboratory testing.